

SPACE FOR LEASE



COLDSTREAM

1517 BULL LEA ROAD, SUITE 150 | LEXINGTON, KY 40511

THE PROPERTY

Rentable SF:	3,547 SF / 3,025 SF (usable)
Property Type:	Office / R&D / Medical
Zoning:	P-2
Location:	Coldstream Research Park

Located at the University of Kentucky's booming Coldstream Research Park, the 3,547 SF office suite features updated bathrooms and lighting throughout common areas (currently under construction). Very nicely appointed space with abundant natural light.

In addition to seven (7) large offices, the suite also houses one executive office with either a private conference room or executive assistant office. Spacious conference room with R&D type lab or research area featuring vinyl flooring. Great kitchenette with sink and refrigerator to round out the space.



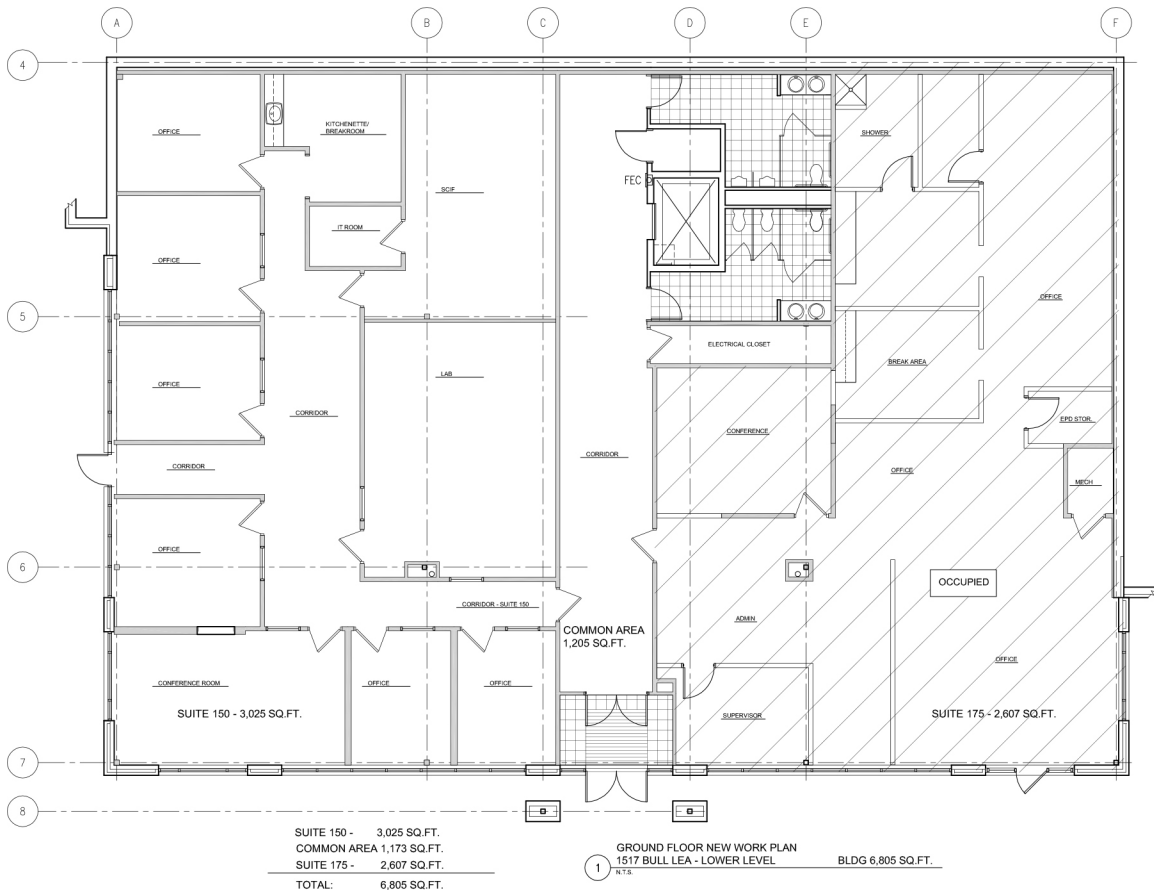
CONTACT

David Graves, Principal Broker/Co-Founder
859.368.0203 (o) | 859.806.3478 (m)
DGraves@cypresspropertygroup.com

SPACE FOR LEASE



1517 BULL LEA ROAD, SUITE 150 | LEXINGTON, KY 40511



CONTACT

David Graves, Principal Broker/Co-Founder
 859.368.0203 (o) | 859.806.3478 (m)
 DGraves@cypresspropertygroup.com